

Miriam inc.
Marketing Agency



*We look forward to working
with you to design a Trade
Show Exhibit Booth, Graphics &
Promotional Items that will
make your Trade Show
experience a SUCCESS!*

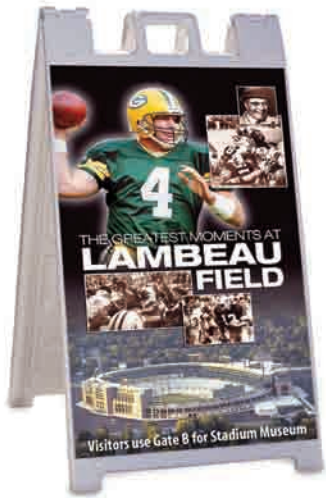
Miriam & Makara



800-457-2369

www.PortableDisplayBooths.com





Our Event Products Section showcases popular products commonly used at both trade shows and for events. Since every event presents different display challenges remember that the entire visproducts catalog is full of displays that are applicable to the Event industry. Browse through the table of contents for a full Menu of event display possibilities!



E V E N T P R O D U C T S

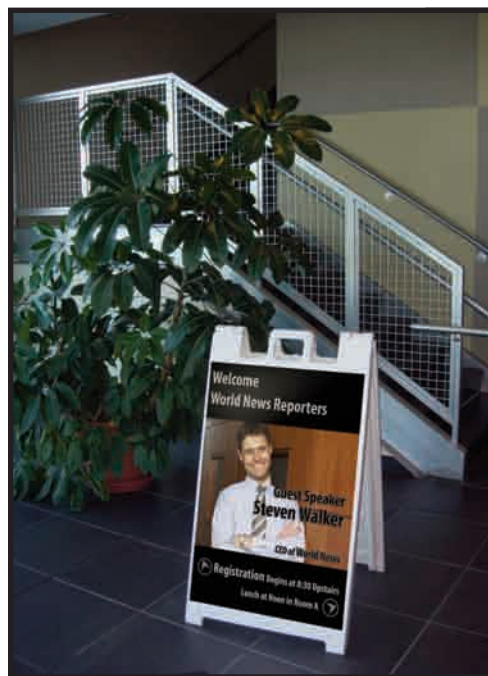
the VALET

Easy to move and set up anywhere, the **Valet** is perfect for outdoor or indoor use. Great for corporate environments, trade shows, expos, events and more. Just find your perfect location, spread out the dual board hinged display and the Valet will be sure to catch the attention of pedestrians and motorists alike.

The Valet comes in two sizes 25" x 45" or 25" x 36". The valet is hinged which makes the double sided features perfect to display multiple messages in high traffic areas! Outdoor signage needs to be stable on windy days or in poor weather conditions. The Valet stays in place and is sturdy enough to use in most applications. When increased weight is desired the Valet can be filled with sand to add 5lbs. more weight per side. Constructed of heavy duty durable plastic for long life, the Valet can take a beating and still look great for years. Graphics can be mounted permanently to the unit. Need replaceable graphics? No problem, the Valet features optional easy to use mounting hardware for easy graphic change out.



When you want to get noticed...The Valet will drive in great results!



VALET

THE FORUM IS A VERSATILE, PORTABLE DEMONSTRATION UNIT.

The Forum unit is made from polypropylene with a non-porous surface for easy cleaning. This unit has a rigid top, curved base with an inside shelf, poles and a header. Poles and header may be removed for counter only use. Sets up in a matter of minutes.



Graphics may be applied to the entire base, including counter and the header. This unit is available only in white.



The entire system collapses into a black nylon bag which is included.

Demo • Sample • Sell

Great looks combined with utility sets The Forum apart. It features a header that towers above the crowd, three message holding walls and a tray that also accepts a graphic.

Constantly changing your graphic? Have them attached by velcro to accommodate changes, or graphics can be permanently mounted to the walls and tray.

FORUM

genie

inflatable event displays.

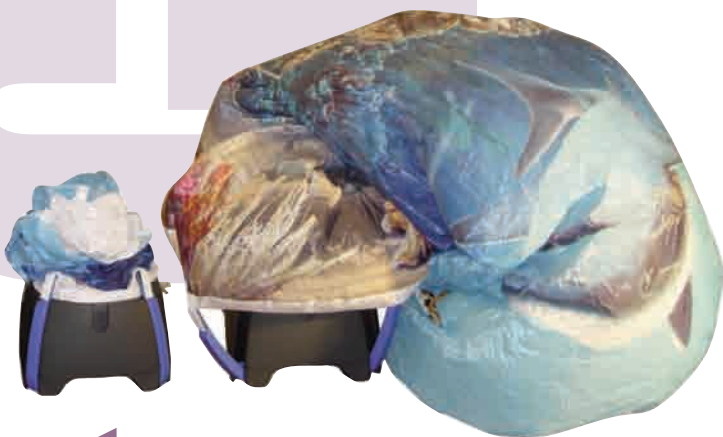


8 to 12.5ft high
Inflatable Display

The exciting inflatable display **Genie** is perfect for mobile communication and effective marketing at road shows, presentations, malls, and trade shows. Just take the top off the compact case, plug it in and within moments you have a display even as tall as 12.5'. This amazing product inflates itself and stands tall. It's that simple! Break down is just as easy, unplug and it deflates for easy packing right back into the unit. Great for indoors and firm enough for outdoor use. The Genie comes with four tabs for tying down the unit when needed. Unique 360° wrap around presentation gives your message maximum visibility from all angles!

Need a little marketing muscle?...want to turn more heads and make a big splash in a crowd? The Genie is at your command!

GENIE





*The Portable Self Contained Backlit Display System
That's Both A Table Top & Podium All In One!*

The 2N1 unit is the best of both worlds. Make it a podium display, display just about anything with the sturdy top shelf card readers, monitors, laptops and products....it can hold a 150 lbs! Hide the unwanted clutter on the bottom shelf it's capable of holding 60 lbs.! To top it all off the 2N1 features an eye catching backlit image on the front to really get your message noticed. The 2N1 can be easily switched into a table top display with the same illuminated image on the front. Then open it up to reveal more graphics, it's great to use when you want to maximize your graphic campaign. The best part... set up can be accomplished in less than 30 seconds. The 2N1 can be used at trade shows, mobile marketing events, retail environments and much more.

Illuminate your Graphics! include the sides to maximize your graphic campaign!



FLYER

dynamic banner system

FLYER

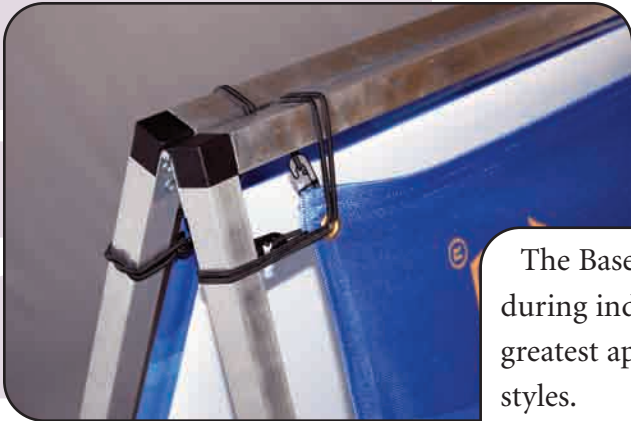


Designed and manufactured to withstand severe weather conditions The FLYER dynamic banner system is hands down the highest quality system of it's kind. The Unique patented design outlasts and out performs the competition on every level. The FLYER even offers a Lifetime Guarantee to back it up! Your Marketing message will look fantastic emblazoned on the tear shaped or circle graphic options. Perfect for Events, Tradeshow, Promotional Marketing and more. Great for use outdoors as well as on side walks, paved areas and even inside when the optional indoor steel stand is used. The FLYER comes in 2 graphic styles, Dacron, a lightweight fabric perfect for blowing in the wind; Saturn, a heavier, durable vinyl ideal for the outdoors! It has two mechanisms to handle wind: a bearing polypropylene bushing allowing the graphic to rotate out of the wind; but equally important is that the top baton section bends at the same time as the whole unit swivels out of the wind and therefore handles gusts from any direction very well.

- Lifetime Guarantee! (hardware only)
- Visibility: the message is always visible.
- Universal usage: they can be used both indoors and outdoors.
- Ability to rotate in high winds.
- Portability: the carry bag is only 3 feet long and weighs just 2lbs.
- Eye-catching appearance.
- Non-rust.
- Can be doublesided
- Three sizes for all needs. (6' 6", 9' 9", 13' 3" high)
- Available circle shape. (50.5")

The FLYER material comes in 2 graphic styles, Dacron, a lightweight fabric perfect for blowing in the wind; Saturn, a heavier, durable vinyl..ideal for the outdoors!

BASELINE™



The BaseLine is an inexpensive lightweight aluminum “A” frame for use during indoor and outdoor events. The simplicity of the BaseLine system is its greatest appeal. Featuring easy set up and three quick graphic attachment styles.

Display your graphics single or double sided. Graphics can be attached with bungees, velcro (not shown) or a complete fabric cover of the frame. Choose from three graphic options: FabriMesh, Saturn vinyl and Microknit.

For any and all outdoor and indoor events, exhibitions, promotions and shows the BaseLine is a perfect choice.



fabric cover



bungee system

Saturn Vinyl Not Available for Complete Fabric Cover option.

Frame Dimensions: 98.435”(w) x 38.39”(h) x 25.2”(d)
Approximate weight: 7.6 lbs. (without graphic)

Applications:

- Sporting events
- Directional signage
- High traffic areas
- Any outdoor or indoor venue

Features:

- Easily transported
- Supplied carrying bag
- Easy assembly - no tools required
- Universal usage - indoor and outdoor
- Includes six stakes

Benefits:

- Multiple graphic options
- Lightweight aluminum frame
- Single or double sided visibility
- Perfect in very windy conditions

BASELINE

Event Tent™

E
V
E
N
T
T
E
N
T



10' x 10' base

62 lbs.

The Event Tent is an inexpensive classic canopy style tent. The waterproof covering provides a great shield against sun and rain. The Event Tent can be utilized indoors or out to promote your event. With four sides and a sloping canopy your message is visible from all angles and distances.

The Event Tent protective canopy top is made of durable outdoor fade-resistant polyester and has white powder coated steel pop-up support poles. It pops up in minutes for maximum visibility and shelter.

Applications:

- Fairs
- Festivals
- Sports Venues
- Any outdoor or indoor venue

Features:

- Waterproof material
- Easy two person set up
- Easy assembly - no tools required
- No tools required
- Universal usage - indoor and outdoor
- Finished frame - white powder coated

Benefits:

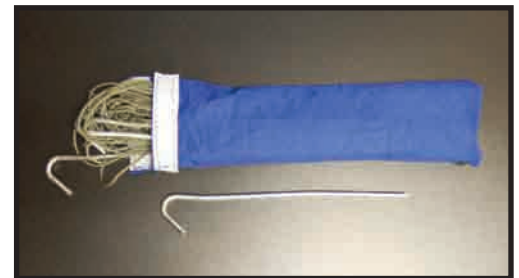
- 360 degree visibility
- Use as a shelter
- Durable canopy material
- Made for inclement conditions

Accessories:

- Stakes
- Anchor Ballasts
- Soft case w/ wheels
- Hard case w/ wheels



Anchor Ballasts



Stake and Pole Kit

Rally Banner™

The Rally Banner is designed for outdoor banner displays. The graphic is attached to the frame with multiple secure connections for greater stability. With the ability to adjust the height up to 16' your audience will notice your message from great distances at your next event.



Standard Specifications:

Standard Graphic Size: 44" w x adjustable from 54" to 144" h

Stand Dimension: Open 45" w x 210" h x 36" d

Collapsed: (2 separate pieces)

Base - 34" x 17" x 17"

Poles - 68" x 9" x 5"

Stand Footprint: 36" x 36"

Stand Colors: Silver & Gray

Weight: Stand (empty) 44 lbs. / Stand (empty) & Graphics: 55 lbs.

Wind Rating: 25 mph (Base must be filled. For high winds add additional weight.)

Additional Features:

- Your message will be easy to see
- Great for outdoor events and venues
- Durable and sturdy base, just add water or sand.

Accessories:

2 Black canvas bags

Skyblade™

Sky Blade is a lightweight and portable flag stand perfect for outdoor events. The Sky Blade is designed to hold up in outdoor conditions with either the weighted base or ground stake. For higher winds add additional weight. With one or multiple units and three different heights available your message will have exceptional visibility for all to see.



SKYBLADE

Skyblade Standard Specifications			Wind Speed Guidelines			
Stand Size	Weight w/Xbase	Weight w/ Ground Stake	Xbase	Xbase w/ additional weight	Ground Stake	Xbase + Snow & Soil Stakes
Reg 6' 5"	22lbs.	4.4lbs.	30 mph	40 mph	40 mph	40 mph
Super 9' 8"	23.8lbs.	6.2lbs.	20 mph	30 mph	40 mph	40 mph
Giant 13'	25.6lbs.	8lbs.	N/A	20 mph	30 mph	40 mph



Skyblade Ground Stake

Applications:

Golf outings, Beach branding, Directional signage, College/Universities

Benefits:

Stable in windy conditions, great for long term outdoor use, exceptional image visibility

Features:

Three heights - Regular, Super and Giant
Easy to transport
Designed for both indoor and outdoor use

Ridgeline™

The Ridgeline is an effective message or branding carrier and a super outdoor space definer that can be used to attract attention at any indoor and outdoor event.



Ridgeline is very compact and portable when unassembled. An ideal display in all kinds of environments. It's unique spring construction allows the product to virtually unfold itself once you take it out of the bag. Putting it back together is done in a few easy steps - it does not get any easier than that.

Applications:

- Corporate outings
- Space definition
- Sporting events
- Directional signage
- High traffic areas
- Any outdoor or indoor venue

Benefits:

- Unique spring construction
- Simple message change
- User-friendly design
- Ideal for many environments
- 360 degree visibility

Features:

- Easily transported and stored
- Unique shape that attracts attention
- Easy assembly - no tools required
- Universal usage - indoor and outdoor
- Includes six stakes for stability



Outpost™



The Outpost is a heavy duty outdoor double sided display. It features a tool-free assembly and rugged aluminum steel construction. The dual spring design flexes to help withstand wind gusts. The base can be filled with water or sand for extra stability and has wheels for easy installation and evening storage or for moving indoors after hours. The Outpost is a great display for indoor and outdoor events.

Applications:

Retail environments
Store fronts
Directional signage
High traffic areas
Outdoor Events

Benefits:

Heavy Duty construction
Simple message change
Double sided display

Features:

Easy assembly
Universal usage
Wheels on base

Standard Specifications

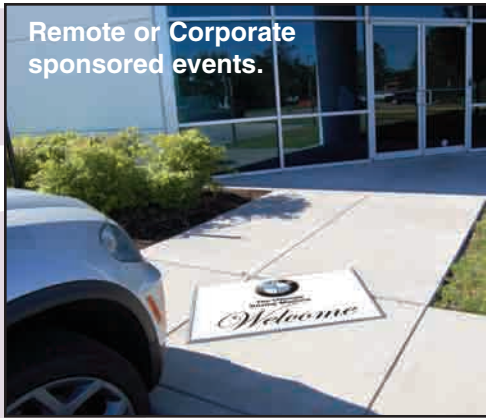
Unit Dimensions:

29.33"w x 49"h x 24"d

Approximate weight:

Hardware - 31lbs empty / 110lbs full
Hardware & Graphic - 33lbs empty

Ad Mat



The Ad Mat is a billboard type display that lies on the floor or ground with the ability to easily and quickly change out the graphics. Combine several Ad Mat displays to define spaces and direct guests at any event. Place in all areas or anywhere there is high foot traffic and your message will not be missed. The Ad Mat is a great display for indoor and outdoor use.



Great space definition for registration lines.

Applications:

- Guerilla Marketing
- Registration
- Directional Signage
- Ticket Counters
- Event Line Advertising

Benefits:

- Simple Message Change
- Easy to Reposition
- Combine several to define outdoor spaces

Features:

- Easily Assembled
- Universal usage
- Skid Resistant
- Adhesive Free
- Heavy Duty Construction
- Stays In Place

Standard Specifications



Print: 33.0625" x 23.375"
 Live: 33.0625" x 23.375"
 Final: 33.5625" x 23.875"
 (including encapsulation)

Medium:
 33.0625" x 23.375"
 33.0625" x 23.375"
 33.5625" x 23.875"

Large:
 39.3125" x 27.8125"
 39.3125" x 27.8125"
 39.8125" x 28.3125"

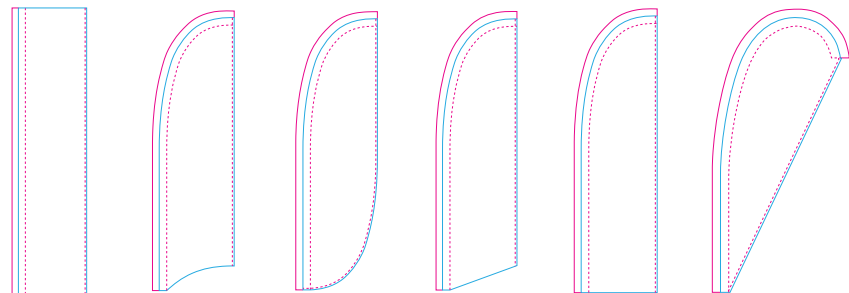
Great for retail, exhibit halls or any indoor event.

AD MAT

Banshee™

kinetic banner system

The Banshee kinetic banner system is designed to be used indoors or outdoors in most weather conditions. The six unique shapes are designed to give you a variety of options to display your marketing message at Events, Trade Shows, Promotional Marketing and more. The Banshee uses the Pennant fabric process which is a Kaleidoscope Select process that uses full saturation so your message bleeds through and can be seen on both sides of the display. This system has two mechanisms to handle wind: a bearing polypropylene bushing allowing the graphic to rotate out of the wind; but equally important is that the top baton section bends at the same time as the whole unit swivels out of the wind and therefore handles gusts from any direction very well. Banshee is a simple, durable and effective banner system.



Rectangle Concave Convexa Angled Straight Drop

Pennant fabric process -

This process is a one sided fabric with bleed through saturation. It is used with all Banshee systems and also can be used with hanging banner applications. The Pennant's full saturation feature gives your message 360 degree visibility.

BANSHEE